



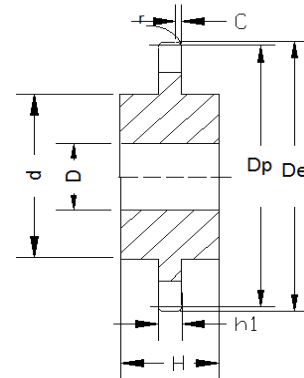
**SPROCKETS FOR 2 SIMPLEX CHAINS 40 (1/2" Pitch)
SPROCKETS TYPE C A**

Chain: Pitch: 12.7mm
Internal width: 7.85mm
Roller dia.: 7.92mm

Sprocket: Tooth radius r:
Radius width C:
Tooth width h1:
Tooth width L:
Tooth width h2:
Tooth width h3:
Full hiath H: -

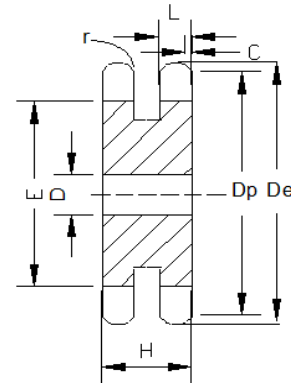
SIMPLEX-TYPE C-STEEL

Teeth	De	D	d	H
12	2.17	1/2	1 39/64★	1 1/2
13	2.33	1/2	1 3/4	1 1/2
14	2.49	1/2	1 11/16	1 1/2
15	2.65	1/2	1 7/8	1 1/2
16	2.81	1/2	2	1 1/2
17	2.98	2 1/8	2 1/8	1 1/2
18	3.14	2 5/16	2 5/16	1 1/2



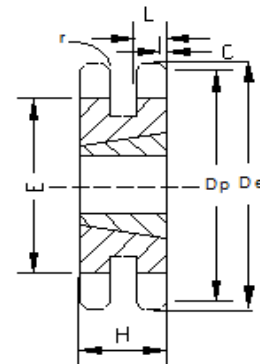
DUPLEX SINGLE-TYPE A-STEEL

Teeth	De	Dp	D	H	E	TYPE
15	2.65	2.405	1/2	1 13/32	1 13/16	A
16	2.81	2.563	1/2	1 13/32	2	A
17	2.98	2.721	1/2	1 13/32	2 1/8	A
18	3.14	2.879	1/2	1 13/32	2 5/16	A
19	3.3	3.038	5/8	1 13/32	2 1/2	A
20	3.46	3.196	5/8	1 13/32	2 5/8	A
21	3.62	3.355	5/8	1 13/32	2 25/32	A
22	3.78	3.513	5/8	1 13/32	2 15/16	A
23	3.94	3.672	5/8	1 13/32	2 3/32	A
24	4.1	3.831	5/8	1 13/32	2 17/64	A



DUPLEX SINGLE-TAPER BUSHED-STEEL

Teeth	De	Dp	BUSH	H	E	TYPE
19	3.3	3.038	1215	1 13/32	2 1/2	A
20	3.46	3.196	1215	1 13/32	2 5/8	A
21	3.62	3.355	1615	1 13/32	2 25/32	A
23	3.94	3.672	1615	1 13/32	2 3/32	A
24	4.1	3.831	1615	1 13/32	2 17/64	A





**SPROCKETS FOR 2 SIMPLEX CHAINS 50 (5/8" Pitch)
SPROCKETS TYPE A C**

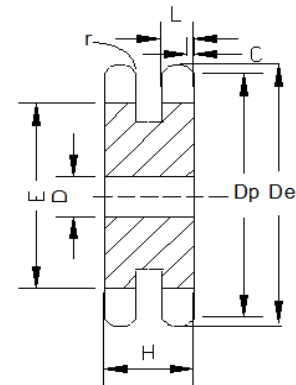
Chain: Pitch: 15.875mm
Internal width: 9.4mm
Roller dia.: 10.16mm

Sprocket:

Tooth radius r:
Radius width C:
Tooth width h1:
Tooth width L:
Tooth width h2:
Tooth width h3:
Full high H: -

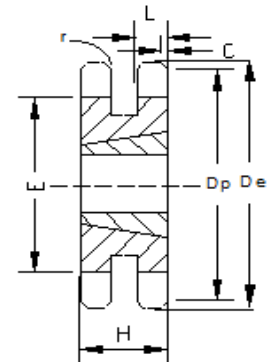
DUPLEX SINGLE-TYPE A-STEEL

Teeth	De	Dp	D	H	E	TYPE
15	3.32	3.006	5/8	1 21/32	2 3/8	A
16	3.52	3.204	5/8	1 21/32	2 1/2	A
17	3.72	3.401	5/8	1 21/32	2 11/16	A
18	3.92	3.599	5/8	1 21/32	2 57/64	A
19	4.12	3.797	5/8	1 21/32	3 5/64	A
20	4.32	3.995	5/8	1 21/32	3 9/32	A
21	4.52	4.194	5/8	1 21/32	3 31/64	A
22	4.72	4.392	5/8	1 21/32	3 11/16	A
23	4.92	4.59	5/8	1 21/32	3 57/64	A
24	5.12	4.788	5/8	1 21/32	4 5/64	A



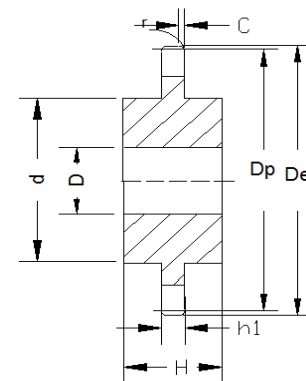
DUPLEX SINGLE-TAPER BUSHED-STEEL

Teeth	De	Dp	BUSH	H	E	TYPE
17	3.72	3.401	1615	1 21/32	2 11/16	A
18	3.92	3.599	1615	1 21/32	2 57/64	A
19	4.12	3.797	1615	1 21/32	3 5/64	A
21	4.52	4.194	2012	1 21/32	3 15/16	A
23	4.92	4.59	2012	1 21/32	3 57/64	A
24	5.12	4.788	2012	1 21/32	4 5/64	A



SIMPLEX-TYPE C-STEEL

Teeth	De	D	d	H
12	2.71	5/8	2★	1 5/8
13	2.91	5/8	1 7/8	1 5/8
14	3.11	5/8	2 1/8	1 5/8
15	3.32	5/8	2 3/8	1 5/8
16	3.52	5/8	2 1/2	1 5/8
17	3.72	5/8	2 47/64	1 5/8
18	3.92	5/8	2 15/16	1 5/8
19	4.12	3/4	3 5/64	1 5/8
20	4.32	3/4	3	1 5/8





**SPROCKETS FOR 2 SIMPLEX CHAINS 60 (3/4" Pitch)
SPROCKETS TYPE A C**

Chain: Pitch: 19.05mm
Internal width: 12.57mm
Roller dia.: 11.91mm

Sprocket: Tooth radius r:
Radius width C:
Tooth width h1:
Tooth width L:
Tooth width h2:
Tooth width h3:
Full high H: -

DUPLEX SINGLE-TYPE A-STEEL

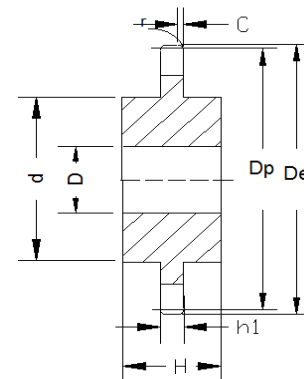
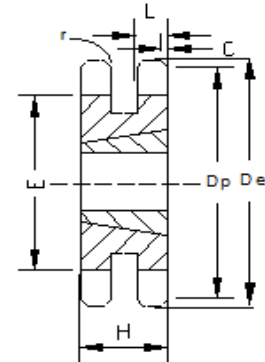
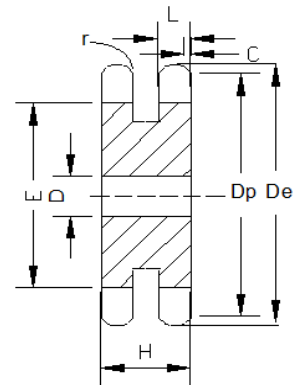
Teeth	De	Dp	D	H	E	TYPE
13	3.49	3.134	3/4	1 15/16	2 11/32	A
14	3.74	3.371	3/4	1 15/16	2 9/16	A
15	3.98	3.607	3/4	1 15/16	2 7/8	A
16	4.22	3.844	3/4	1 15/16	3 3/64	A
17	4.46	4.082	3/4	1 15/16	3 1/4	A
18	4.7	4.319	3/4	1 15/16	3 1/2	A
19	4.95	4.557	3/4	1 15/16	3 45/64	A
20	5.19	4.794	3/4	1 15/16	3 61/64	A
21	5.43	5.032	3/4	1 15/16	4 3/16	A

DUPLEX SINGLE-TAPER BUSHED-STEEL

Teeth	De	Dp	BUSH	H	E	TYPE
17	4.46	4.002	1615	1 15/16	3 7/32	A
18	4.7	4.319	2012	1 15/16	3 15/32	A
19	4.95	4.557	2012	1 15/16	3 45/64	A
20	5.19	4.794	2517	1 15/16	3 61/64	A
21	5.43	5.032	2517	1 15/16	4 3/16	A
23	5.91	5.508	2517	1 15/16	4 43/64	A
24	6.15	5.746	2517	1 15/16	4 29/32	A

SIMPLEX-TYPE C-STEEL

Teeth	De	D	d	H
12	3.25	3/4	2 3/8★	2
13	3.49	3/4	2 11/32	2
14	3.74	3/4	2 9/16	2
15	3.98	3/4	2 7/8	2
16	4.22	3/4	3 1/16	2
17	4.46	3/4	3 1/4	2
18	4.7	3/4	3 1/2	2





**SPROCKETS FOR 2 SIMPLEX CHAINS 80 (1" Pitch)
SPROCKETS TYPE A C**

Chain: Pitch: 25.4mm
Internal width: 15.75mm
Roller dia.: 15.88mm

Sprocket: Tooth radius r:
Radius width C:
Tooth width h1:
Tooth width L:
Tooth width h2:
Tooth width h3:
Full high H: -

DUPLEX SINGLE-TYPE A-STEEL

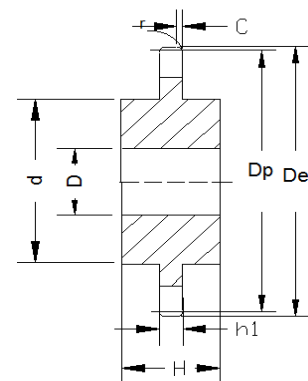
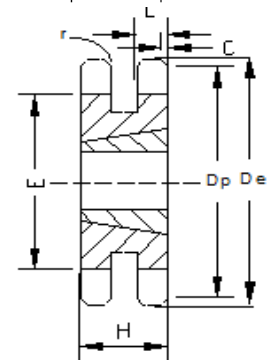
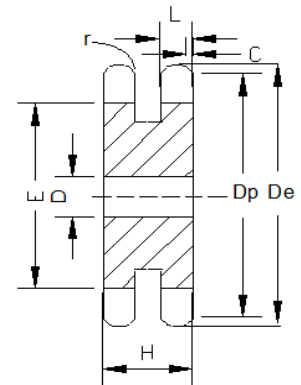
Teeth	De	Dp	D	H	E	TYPE
13	4.66	4.179	1	2 3/16	3 1/64	A
14	4.98	4.494	1	2 3/16	3 11/32	A
15	5.3	4.81	1	2 3/16	3 13/16	A
16	5.63	5.126	1	2 3/16	4	A
17	5.95	5.442	1	2 3/16	4 5/16	A
18	6.27	5.759	1	2 3/16	4 41/64	A
19	6.59	6.076	1	2 3/16	4 61/64	A
20	6.91	6.392	1	2 3/16	5 9/32	A
21	7.24	6.71	1	2 3/16	5 19/32	A
22	7.56	7.027	1	2 3/16	5 19/32	A

DUPLEX SINGLE-TAPER BUSHED-STEEL

Teeth	De	Dp	BUSH	H	E	TYPE
17	5.95	5.442	2517	2 3/16	4 5/16	A
18	6.27	5.759	2517	2 3/16	4 3/4	A
19	6.59	6.076	3020	2 3/16	4 61/64	A
20	6.91	6.392	3020	2 3/16	5 9/32	A
21	7.24	6.71	3020	2 3/16	5 19/32	A
23	7.88	7.344	3020	2 3/16	6 15/64	A

SIMPLEX-TYPE C-STEEL

Teeth	De	D	d	H
12	3.25	3/4	2 3/8★	2
13	3.49	3/4	2 11/32	2
14	3.74	3/4	2 9/16	2
15	3.98	3/4	2 7/8	2
16	4.22	3/4	3 1/16	2
17	4.46	3/4	3 1/4	2
18	4.7	3/4	3 1/2	2





**SPROCKETS FOR 2 SIMPLEX CHAINS 100 (1 1/4" Pitch)
SPROCKETS TYPE A C**

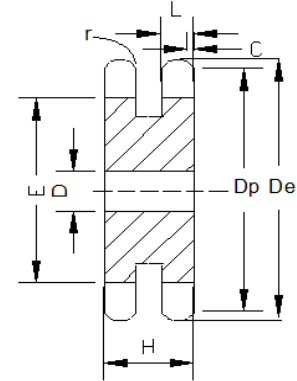
Chain: Pitch: 31.75mm
Internal width: 18.9mm
Roller dia.: 19.05mm

Sprocket:

Tooth radius r:
Radius width C:
Tooth width h1:
Tooth width L:
Tooth width h2:
Tooth width h3:
Full high H: -

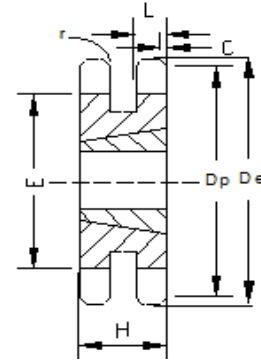
DUPLEX SINGLE-TYPE A-STEEL

Teeth	De	Dp	D	H	E	TYPE
13	5.82	5.223	1	2 11/16	3 25/32	A
14	6.23	5.617	1 1/4	2 11/16	4 3/16	A
15	6.63	6.012	1 1/4	2 11/16	4 19/32	A
16	7.03	6.407	1 1/4	2 11/16	4 1/2	A
17	7.44	6.803	1 1/4	2 11/16	4 29/32	A
18	7.84	7.198	1 1/4	2 11/16	5 9/32	A
19	8.24	7.595	1 1/4	2 11/16	6 13/64	A
20	8.64	7.991	1 1/4	2 11/16	6 39/64	A
21	9.04	8.387	1 1/4	2 11/16	7	A



DUPLEX SINGLE-TAPER BUSHED-STEEL

Teeth	De	Dp	BUSH	h	E	TYPE
16	7.03	6.407	2517	2 11/16	5	A
17	7.44	6.803	3020	2 11/16	5 13/32	A
18	7.84	7.198	3020	2 11/16	5 51/64	A
19	8.24	7.595	3020	2 11/16	6 13/64	A
21	9.04	8.387	3020	2 11/16	7	A



SIMPLEX-TYPE C-STEEL

Teeth	De	D	d	H
10	4.6	1	3 9/32	2 7/8
11	5.01	1	3 9/16	2 7/8
12	5.42	1	4	2 7/8
13	5.82	1	3 57/64	2 7/8
14	6.23	1 1/4	4 3/16	2 7/8

