

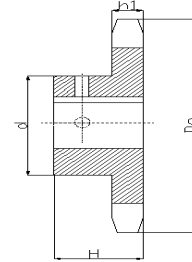
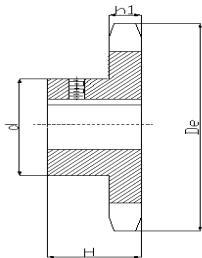


**FINISHED BORE SPROCKETS FOR CHAIN 35 (3/8" Pitch)
SPROCKETS TYPE BS**

Chain: Pitch: 9.525mm
Internal width: 4.77mm
Roller dia.: 5.08mm

Sprocket: Tooth radius r:
Radius width C:
Tooth width h1:
Tooth width h2:
Tooth width h3:
Full high H: -

Note 1: ★ indicates no keyway, (2) 1/4" setscrews only in 1/2" & 1/8" bore
↑ keyway with setscrew at 90°, hub diameter vary to suit different bore sizes
Note 2: ★ indicates no keyway, (2) 1/4" setscrews only in 1/2" & 1/8" bore at 90°
↑ setscrew at 90° and 180° to key



SIMPLEX-TYPE "BS"-2 SETSCREWS-BORED TO SIZE

NO.35-HARDENED TEETH-2 SETSCREWS-BORED TO SIZE

Teeth	De	H	STOCK FINISHED BORES INCLUDES KEYWAY AND 2 SETSCREWS	STOCK FINISHED BORES INCLUDES KEYWAY AND 2 SETSCREWS
9	1.26	3/4	★3/8	★3/8
10	1.38	3/4	★3/8	★3/8 -★1/2 -†5/8
11	1.5	3/4	★3/8	★3/8 -★1/2 -†5/8 -†3/4
12	1.63	3/4		-★1/2 - 5/8 - 3/4
13	1.75	3/4	-★1/2	-★1/2 - 5/8 - 3/4
14	1.87	3/4	-★1/2	-★1/2 - 5/8 - 3/4
15	1.99	3/4	-★1/2	-★1/2 - 5/8 - 3/4 - 7/8 - 1
16	2.11	3/4	-★1/2	-★1/2 - 5/8 - 3/4 - 7/8 - 1
17	2.23	3/4	-★1/2	-★1/2 - 5/8 - 3/4 - 7/8 - 1
18	2.35	3/4	-★1/2	-★1/2 - 5/8 - 3/4 - 7/8 - 1
19	2.47	3/4	-★1/2	-★1/2 - 5/8 - 3/4 - 7/8 - 1
20	2.59	3/4	-★1/2	-★1/2 - 5/8 - 3/4 - 7/8 - 1
21	2.71	7/8	-★1/2	-★1/2 - 5/8 - 3/4 - 7/8 - 1
22	2.83	7/8	-★1/2	-★1/2 - 5/8 - 3/4 - 7/8 - 1
23	2.95	7/8	-★1/2	-★1/2 - 5/8 - 3/4 - 7/8 - 1
24	3.07	7/8	-★1/2	-★1/2 - 5/8 - 3/4 - 7/8 - 1
25	3.19	7/8	-★1/2	-★1/2 - 5/8 - 3/4 - 7/8 - 1
26	3.31	7/8	-★1/2	-★1/2 - 5/8 - 3/4 - 7/8 - 1 - 1 1/8 - 1 3/16 - 1 1/4
27	3.43	7/8		- 5/8 - 3/4 - 7/8 - 1 - 1 1/8 - 1 3/16 - 1 1/4
28	3.55	7/8		- 5/8 - 3/4 - 7/8 - 1 - 1 1/8 - 1 3/16 - 1 1/4
30	3.79	7/8		- 5/8 - 3/4 - 7/8 - 1 - 1 1/8 - 1 3/16 - 1 1/4
32	4.03	7/8		- 5/8 - 3/4 - 7/8 - 1 - 1 1/8 - 1 3/16 - 1 1/4
35	4.39	1		- 5/8 - 3/4 - 7/8 - 1 - 1 1/8 - 1 3/16 - 1 1/4
36	4.51	1		- 5/8 - 3/4 - 7/8 - 1 - 1 1/8 - 1 3/16 - 1 1/4
40	4.99	1		- 5/8 - 3/4 - 7/8 - 1 - 1 1/8 - 1 3/16 - 1 1/4
42	5.23	1		- 5/8 - 3/4 - 7/8 - 1 - 1 1/8 - 1 3/16 - 1 1/4
45	5.59	1		- 5/8 - 3/4 - 7/8 - 1 - 1 1/8 - 1 3/16 - 1 1/4
48	5.95	1		- 5/8 - 3/4 - 7/8 - 1 - 1 1/8 - 1 3/16 - 1 1/4
54	6.66	1		- 5/8 - 3/4 - 7/8 - 1 - 1 1/8 - 1 3/16 - 1 1/4
60	7.38	1		- 5/8 - 3/4 - 7/8 - 1 - 1 1/8 - 1 3/16 - 1 1/4
70	8.58	1		- 3/4 - 7/8 - 1 - 1 1/8 - 1 3/16 - 1 1/4
72	8.81	1		- 3/4 - 7/8 - 1 - 1 1/8 - 1 3/16 - 1 1/4
80	9.77	1		- 3/4 - 7/8 - 1 - 1 1/8 - 1 3/16 - 1 1/4
84	10.25	1		- 3/4 - 7/8 - 1 - 1 1/8 - 1 3/16 - 1 1/4
96	11.68	1		- 3/4 - 7/8 - 1 - 1 1/8 - 1 3/16 - 1 1/4
112	13.59	1		- 3/4 - 7/8 - 1 - 1 1/8 - 1 3/16 - 1 1/4

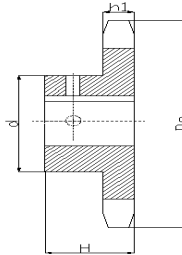


FINISHED BORE SPROCKETS FOR CHAINS 40 (1/2" Pitch)
SPROCKETS TYPE BS

Chain: Pitch: 12.7mm
Internal width: 7.85mm
Roller dia.: 7.92mm

Sprocket: Tooth radius r:
Radius width C:
Tooth width h1:
Tooth width h2:
Tooth width h3:
Full high H: -

Note 1:★ indicates no keyway,(2) 1/4"setscrews only
hub diameter vary to suit different bore sizes



SIMPLEX-TYPE"BS"-2 SETSCREWS-BORED TO SIZE

Teeth	De	H	STOCK FINISHED BORES INCLUDES KEYWAY AND 2 SETSCREWS的普通成形孔																				
9	1.67	7/8	★1/2	-	5/8																		
10	1.84	7/8	★1/2	-	5/8	-	3/4																
11	2	7/8	★1/2	-	5/8	-	3/4	-	7/8														
12	2.17	7/8	★1/2	-	5/8	-	3/4	-	7/8	-	1												
13	2.33	7/8	★1/2	-	5/8	-	3/4	-	7/8	-	1												
14	2.49	7/8	★1/2	-	5/8	-	3/4	-	7/8	-	1	-	1 1/8										
15	2.65	7/8	★1/2	-	5/8	-	3/4	-	7/8	-	1	-	1 1/8	-	1 3/16	-	1 1/4						
16	2.81	7/8			5/8	-	3/4	-	7/8	-	1	-	1 1/8	-	1 3/16	-	1 1/4						
17	2.98	1			5/8	-	3/4	-	7/8	-	1	-	1 1/8	-	1 3/16	-	1 1/4						
18	3.14	1			5/8	-	3/4	-	7/8	-	1	-	1 1/8	-	1 3/16	-	1 1/4	-	1 3/8	-	1 7/16	-	1 1/2
19	3.3	1			5/8	-	3/4	-	7/8	-	1	-	1 1/8	-	1 3/16	-	1 1/4	-	1 3/8	-	1 7/16	-	1 1/2
20	3.46	1			5/8	-	3/4	-	7/8	-	1	-	1 1/8	-	1 3/16	-	1 1/4	-	1 3/8	-	1 7/16	-	1 1/2
21	3.62	1			5/8	-	3/4	-	7/8	-	1	-	1 1/8	-	1 3/16	-	1 1/4	-	1 3/8	-	1 7/16	-	1 1/2
22	3.78	1			5/8	-	3/4	-	7/8	-	1	-	1 1/8	-	1 3/16	-	1 1/4	-	1 3/8	-	1 7/16	-	1 1/2
23	3.94	1			5/8	-	3/4	-	7/8	-	1	-	1 1/8	-	1 3/16	-	1 1/4	-	1 3/8	-	1 7/16	-	1 1/2
24	4.1	1			5/8	-	3/4	-	7/8	-	1	-	1 1/8	-	1 3/16	-	1 1/4	-	1 3/8	-	1 7/16	-	1 1/2
25	4.26	1			5/8	-	3/4	-	7/8	-	1	-	1 1/8	-	1 3/16	-	1 1/4	-			1 7/16	-	1 1/2
26	4.42	1			5/8	-	3/4	-	7/8	-	1	-	1 1/8	-	1 3/16	-	1 1/4	-			1 7/16	-	1 1/2
27	4.58	1			5/8	-	3/4	-	7/8	-	1	-	1 1/8	-	1 3/16	-	1 1/4	-			1 7/16	-	1 1/2
28	4.74	1			5/8	-	3/4	-	7/8	-	1	-	1 1/8	-	1 3/16	-	1 1/4	-			1 7/16	-	1 1/2
29	4.9	1			5/8	-	3/4	-	7/8	-	1	-	1 1/8	-	1 3/16	-	1 1/4	-			1 7/16	-	1 1/2
30	5.06	1			5/8	-	3/4	-	7/8	-	1	-	1 1/8	-	1 3/16	-	1 1/4	-			1 7/16	-	1 1/2
31	5.22	1			5/8	-	3/4	-	7/8	-	1	-	1 1/8	-	1 3/16	-	1 1/4	-			1 7/16	-	1 1/2
32	5.38	1			5/8	-	3/4	-	7/8	-	1	-	1 1/8	-	1 3/16	-	1 1/4	-			1 7/16	-	1 1/2
33	5.54	1			5/8	-	3/4	-	7/8	-	1	-	1 1/8	-	1 3/16	-	1 1/4	-			1 7/16	-	1 1/2
34	5.7	1			5/8	-	3/4	-	7/8	-	1	-	1 1/8	-	1 3/16	-	1 1/4	-			1 7/16	-	1 1/2
35	5.86	1			5/8	-	3/4	-	7/8	-	1	-	1 1/8	-	1 3/16	-	1 1/4	-			1 7/16	-	1 1/2
36	6.02	1			5/8	-	3/4	-	7/8	-	1	-	1 1/8	-	1 3/16	-	1 1/4	-			1 7/16	-	1 1/2
37	6.18	1			5/8	-	3/4	-	7/8	-	1	-	1 1/8	-	1 3/16	-	1 1/4	-			1 7/16	-	1 1/2
38	6.33	1			5/8	-	3/4	-	7/8	-	1	-	1 1/8	-	1 3/16	-	1 1/4	-			1 7/16	-	1 1/2
39	6.49	1			5/8	-	3/4	-	7/8	-	1	-	1 1/8	-	1 3/16	-	1 1/4	-			1 7/16	-	1 1/2
40	6.65	1 1/8				-	3/4	-	7/8	-	1	-	1 1/8	-	1 3/16	-	1 1/4	-			1 7/16	-	1 1/2
41	6.81	1 1/8				-	3/4	-	7/8	-	1	-	1 1/8	-	1 3/16	-	1 1/4	-			1 7/16	-	1 1/2
42	6.97	1 1/8				-	3/4	-	7/8	-	1	-	1 1/8	-	1 3/16	-	1 1/4	-			1 7/16	-	1 1/2
43	7.13	1 1/8				-	3/4	-	7/8	-	1	-	1 1/8	-	1 3/16	-	1 1/4	-			1 7/16	-	1 1/2
44	7.29	1 1/8				-	3/4	-	7/8	-	1	-	1 1/8	-	1 3/16	-	1 1/4	-			1 7/16	-	1 1/2
45	7.45	1 1/8				-	3/4	-	7/8	-	1	-	1 1/8	-	1 3/16	-	1 1/4	-			1 7/16	-	1 1/2
46	7.61	1 1/8				-	3/4	-	7/8	-	1	-	1 1/8	-	1 3/16	-	1 1/4	-			1 7/16	-	1 1/2
47	7.77	1 1/8				-	3/4	-	7/8	-	1	-	1 1/8	-	1 3/16	-	1 1/4	-			1 7/16	-	1 1/2
48	7.93	1 1/8				-	3/4	-	7/8	-	1	-	1 1/8	-	1 3/16	-	1 1/4	-			1 7/16	-	1 1/2
49	8.09	1 1/8				-	3/4	-	7/8	-	1	-	1 1/8	-	1 3/16	-	1 1/4	-			1 7/16	-	1 1/2

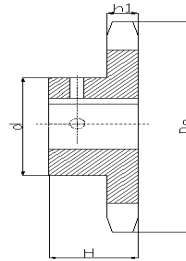


**FINISHED BORE SPROCKETS FOR CHAIN 40 (1/2" Pitch)
SPROCKETS TYPE BS**

Chain: Pitch: 12.7mm
Internal width: 7.85mm
Roller dia.: 7.92mm

Sprocket: Tooth radius r:
Radius width C:
Tooth width h1:
Tooth width h2:
Tooth width h3:
Full high H: -

Note 1: ★ indicates no keyway, (2) 1/4" setscrews only
hub diameter vary to suit different bore sizes
Note 2: ★ indicates no keyway, (2) 1/4" setscrews only in 1/2" & 1/8" bore at 90°
↑ setscrew at 90° and 180° to key



SIMPLEX-TYPE "BS"-2 SETSCREWS-BORED TO SIZE

Teeth	De	H	STOCK FINISHED BORES INCLUDES KEYWAY AND 2 SETSCREWS									
50	8.25	1 1/8	- 3/4	- 7/8	- 1	- 1 1/8	- 1 3/16	- 1 1/4	-	- 1 7/16	- 1 1/2	
51	8.41	1 1/8	- 3/4	- 7/8	- 1	- 1 1/8	- 1 3/16	- 1 1/4	-	- 1 7/16	- 1 1/2	
52	8.57	1 1/8	- 3/4	- 7/8	- 1	- 1 1/8	- 1 3/16	- 1 1/4	-	- 1 7/16	- 1 1/2	
53	8.73	1 1/8	- 3/4	- 7/8	- 1	- 1 1/8	- 1 3/16	- 1 1/4	-	- 1 7/16	- 1 1/2	
54	8.89	1 1/8	- 3/4	- 7/8	- 1	- 1 1/8	- 1 3/16	- 1 1/4	-	- 1 7/16	- 1 1/2	
55	9.04	1 1/8	- 3/4	- 7/8	- 1	- 1 1/8	- 1 3/16	- 1 1/4	-	- 1 7/16	- 1 1/2	
56	9.2	1 1/8	- 3/4	- 7/8	- 1	- 1 1/8	- 1 3/16	- 1 1/4	-	- 1 7/16	- 1 1/2	
57	9.36	1 1/8	- 3/4	- 7/8	- 1	- 1 1/8	- 1 3/16	- 1 1/4	-	- 1 7/16	- 1 1/2	
58	9.52	1 1/8	- 3/4	- 7/8	- 1	- 1 1/8	- 1 3/16	- 1 1/4	-	- 1 7/16	- 1 1/2	
59	9.68	1 1/8	- 3/4	- 7/8	- 1	- 1 1/8	- 1 3/16	- 1 1/4	-	- 1 7/16	- 1 1/2	
60	9.84	1 1/8	- 3/4	- 7/8	- 1	- 1 1/8	- 1 3/16	- 1 1/4	-	- 1 7/16	- 1 1/2	
70	11.43	1 1/4	- 3/4	- 7/8	- 1	- 1 1/8	- 1 3/16	- 1 1/4	-	- 1 7/16	- 1 1/2	
72	11.75	1 1/4	- 3/4	- 7/8	- 1	- 1 1/8	- 1 3/16	- 1 1/4	-	- 1 7/16	- 1 1/2	
80	13.03	1 1/4	- 3/4	- 7/8	- 1	- 1 1/8	- 1 3/16	- 1 1/4	-	- 1 7/16	- 1 1/2	
84	13.66	1 1/4	- 3/4	- 7/8	- 1	- 1 1/8	- 1 3/16	- 1 1/4	-	- 1 7/16	- 1 1/2	
96	15.75	1 1/4	- 3/4	- 7/8	- 1	- 1 1/8	- 1 3/16	- 1 1/4	-	- 1 7/16	- 1 1/2	
112	18.12	1 1/4	- 3/4	- 7/8	- 1	- 1 1/8	- 1 3/16	- 1 1/4	-	- 1 7/16	- 1 1/2	

NO.40-HARDENED TEETH-2 SETSCREWS-BORED TO SIZE

Teeth	De	H	STOCK FINISHED BORES INCLUDES KEYWAY AND 2 SETSCREWS									
9	1.67	7/8	★1/2	- 5/8								
10	1.84	7/8	★1/2	- 5/8	- 3/4							
11	2	7/8	★1/2	- 5/8	- 3/4	- 7/8						
12	2.17	7/8	★1/2	- 5/8	- 3/4	- 7/8	- 1					
13	2.33	7/8	★1/2	- 5/8	- 3/4	- 7/8	- 1					
14	2.49	7/8	★1/2	- 5/8	- 3/4	- 7/8	- 1	- 1 1/8				
15	2.65	7/8	★1/2	- 5/8	- 3/4	- 7/8	- 1	- 1 1/8	- 1 3/16	- 1 1/4		
16	2.81	7/8		- 5/8	- 3/4	- 7/8	- 1	- 1 1/8	- 1 3/16	- 1 1/4		
17	2.98	1		- 5/8	- 3/4	- 7/8	- 1	- 1 1/8	- 1 3/16	- 1 1/4		
18	3.14	1		- 5/8	- 3/4	- 7/8	- 1	- 1 1/8	- 1 3/16	- 1 1/4	- 1 3/8	
19	3.3	1		- 5/8	- 3/4	- 7/8	- 1	- 1 1/8	- 1 3/16	- 1 1/4	- 1 3/8	
20	3.46	1		- 5/8	- 3/4	- 7/8	- 1	- 1 1/8	- 1 3/16	- 1 1/4	- 1 3/8	
21	3.62	1		- 5/8	- 3/4	- 7/8	- 1	- 1 1/8	- 1 3/16	- 1 1/4	- 1 3/8	
22	3.78	1		- 5/8	- 3/4	- 7/8	- 1	- 1 1/8	- 1 3/16	- 1 1/4	- 1 3/8	
23	3.94	1		- 5/8	- 3/4	- 7/8	- 1	- 1 1/8	- 1 3/16	- 1 1/4	- 1 3/8	
24	4.1	1		- 5/8	- 3/4	- 7/8	- 1	- 1 1/8	- 1 3/16	- 1 1/4	- 1 3/8	
25	4.26	1		- 3/4	- 7/8	- 1	- 1 1/8	- 1 1/8	- 1 3/16	- 1 1/4	- 1 7/16	
26	4.42	1		- 3/4	- 7/8	- 1	- 1 1/8	- 1 1/8	- 1 3/16	- 1 1/4	- 1 7/16	
28	4.74	1		- 3/4	- 7/8	- 1	- 1 1/8	- 1 1/8	- 1 3/16	- 1 1/4	- 1 7/16	
30	5.06	1		- 3/4	- 7/8	- 1	- 1 1/8	- 1 1/8	- 1 3/16	- 1 1/4	- 1 7/16	



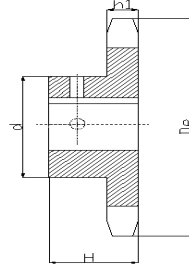
**FINISHED BORE SPROCKETS FOR CHAIN 50 (5/8" Pitch)
SPROCKETS TYPE BS**

Chain: Pitch: 15.875mm
Internal width: 9.4mm
Roller dia.: 10.16mm

Sprocket:

Tooth radius r:
Radius width C:
Tooth width h1:
Tooth width h2:
Tooth width h3:
Full high H: -

Note 1: † keyway with setscrew at 90°
hub diameter vary to suit different bore sizes



SIMPLEX-TYPE"BS"-2 SETSCREWS-BORED TO SIZE

Teeth	De	H	STOCK FINISHED BORES INCLUDES KEYWAY AND 2 SETSCREWS的普通成形孔																			
9	2.09	1	5/8	-	3/4																	
10	2.3	1	5/8	-	3/4	-	7/8	-	† 1													
11	2.5	1	5/8	-	3/4	-	7/8	-	† 1													
12	2.71	1	5/8	-	3/4	-	7/8	-	1 - 1 1/8	-	1 3/16	-	1 1/4									
13	2.91	1	5/8	-	3/4	-	7/8	-	1 - 1 1/8	-	1 3/16	-	1 1/4									
14	3.11	1	5/8	-	3/4	-	7/8	-	1 - 1 1/8	-	1 3/16	-	1 1/4									
15	3.32	1	5/8	-	3/4	-	7/8	-	1 - 1 1/8	-	1 3/16	-	1 1/4	-	1 3/8	-	1 7/16	-	1 1/2			
16	3.52	1	5/8	-	3/4	-	7/8	-	1 - 1 1/8	-	1 3/16	-	1 1/4	-	1 3/8	-	1 7/16	-	1 1/2	-	1 5/8	
17	3.72	1	5/8	-	3/4	-	7/8	-	1 - 1 1/8	-	1 3/16	-	1 1/4	-	1 3/8	-	1 7/16	-	1 1/2	-	1 5/8	
18	3.92	1	5/8	-	3/4	-	7/8	-	1 - 1 1/8	-	1 3/16	-	1 1/4	-	1 3/8	-	1 7/16	-	1 1/2	-	1 5/8	
19	4.12	1	5/8	-	3/4	-	7/8	-	1 - 1 1/8	-	1 3/16	-	1 1/4	-	1 3/8	-	1 7/16	-	1 1/2	-	1 5/8	
20	4.32	1		3/4	-	7/8	-	1 - 1 1/8	-	1 3/16	-	1 1/4	-	1 3/8	-	1 7/16	-	1 1/2	-	1 5/8		
21	4.52	1		3/4	-	7/8	-	1 - 1 1/8	-	1 3/16	-	1 1/4	-	1 3/8	-	1 7/16	-	1 1/2	-			
22	4.72	1		3/4	-	7/8	-	1 - 1 1/8	-	1 3/16	-	1 1/4	-	1 3/8	-	1 7/16	-	1 1/2	-			
23	4.92	1		3/4	-	7/8	-	1 - 1 1/8	-	1 3/16	-	1 1/4	-	1 3/8	-	1 7/16	-	1 1/2	-			
24	5.12	1 1/4		3/4	-	7/8	-	1 - 1 1/8	-	1 3/16	-	1 1/4	-	1 3/8	-	1 7/16	-	1 1/2	-			
25	5.32	1 1/4		3/4	-	7/8	-	1 - 1 1/8	-	1 3/16	-	1 1/4	-	1 3/8	-	1 7/16	-	1 1/2	-			
26	5.52	1 1/4		3/4	-	7/8	-	1 - 1 1/8	-	1 3/16	-	1 1/4	-	1 3/8	-	1 7/16	-	1 1/2	-			
27	5.72	1 1/4		3/4	-	7/8	-	1 - 1 1/8	-	1 3/16	-	1 1/4	-	1 3/8	-	1 7/16	-	1 1/2	-			
28	5.92	1 1/4		3/4	-	7/8	-	1 - 1 1/8	-	1 3/16	-	1 1/4	-	1 3/8	-	1 7/16	-	1 1/2	-			
29	6.12	1 1/4		3/4	-	7/8	-	1 - 1 1/8	-	1 3/16	-	1 1/4	-	1 3/8	-	1 7/16	-	1 1/2	-			
30	6.32	1 1/4		3/4	-	7/8	-	1 - 1 1/8	-	1 3/16	-	1 1/4	-	1 3/8	-	1 7/16	-	1 1/2	-			
31	6.52	1 1/4		3/4	-	7/8	-	1 - 1 1/8	-	1 3/16	-	1 1/4	-	1 3/8	-	1 7/16	-	1 1/2	-	-	-	3/4 - 1 15/16
32	6.72	1 1/4		3/4	-	7/8	-	1 - 1 1/8	-	1 3/16	-	1 1/4	-	1 3/8	-	1 7/16	-	1 1/2	-	-	-	3/4 - 1 15/16
33	6.92	1 1/4		3/4	-	7/8	-	1 - 1 1/8	-	1 3/16	-	1 1/4	-	1 3/8	-	1 7/16	-	1 1/2	-	-	-	3/4 - 1 15/16
34	7.12	1 1/4		3/4	-	7/8	-	1 - 1 1/8	-	1 3/16	-	1 1/4	-	1 3/8	-	1 7/16	-	1 1/2	-	-	-	3/4 - 1 15/16
35	7.32	1 1/4		3/4	-	7/8	-	1 - 1 1/8	-	1 3/16	-	1 1/4	-	1 3/8	-	1 7/16	-	1 1/2	-	-	-	3/4 - 1 15/16
36	7.52	1 1/4		3/4	-	7/8	-	1 - 1 1/8	-	1 3/16	-	1 1/4	-	1 3/8	-	1 7/16	-	1 1/2	-	-	-	3/4 - 1 15/16
37	7.72	1 1/4		3/4	-	7/8	-	1 - 1 1/8	-	1 3/16	-	1 1/4	-	1 3/8	-	1 7/16	-	1 1/2	-	-	-	3/4 - 1 15/16
38	7.92	1 1/4		3/4	-	7/8	-	1 - 1 1/8	-	1 3/16	-	1 1/4	-	1 3/8	-	1 7/16	-	1 1/2	-	-	-	3/4 - 1 15/16
39	8.12	1 1/4		3/4	-	7/8	-	1 - 1 1/8	-	1 3/16	-	1 1/4	-	1 3/8	-	1 7/16	-	1 1/2	-	-	-	3/4 - 1 15/16
40	8.32	1 1/4		3/4	-	7/8	-	1 - 1 1/8	-	1 3/16	-	1 1/4	-	1 3/8	-	1 7/16	-	1 1/2	-	-	-	3/4 - 1 15/16
41	8.52	1 1/4		3/4	-	7/8	-	1 - 1 1/8	-	1 3/16	-	1 1/4	-	1 3/8	-	1 7/16	-	1 1/2	-	-	-	3/4 - 1 15/16
42	8.72	1 1/4		3/4	-	7/8	-	1 - 1 1/8	-	1 3/16	-	1 1/4	-	1 3/8	-	1 7/16	-	1 1/2	-	-	-	3/4 - 1 15/16
43	8.92	1 1/4		3/4	-	7/8	-	1 - 1 1/8	-	1 3/16	-	1 1/4	-	1 3/8	-	1 7/16	-	1 1/2	-	-	-	3/4 - 1 15/16
44	9.11	1 1/4		3/4	-	7/8	-	1 - 1 1/8	-	1 3/16	-	1 1/4	-	1 3/8	-	1 7/16	-	1 1/2	-	-	-	3/4 - 1 15/16
45	9.31	1 1/4		3/4	-	7/8	-	1 - 1 1/8	-	1 3/16	-	1 1/4	-	1 3/8	-	1 7/16	-	1 1/2	-	-	-	3/4 - 1 15/16
46	9.51	1 1/4						1 - 1 1/8	-	1 3/16	-	1 1/4	-	1 3/8	-	1 7/16	-	1 1/2	-	-	-	3/4 - 1 15/16
47	9.71	1 1/4						1 - 1 1/8	-	1 3/16	-	1 1/4	-	1 3/8	-	1 7/16	-	1 1/2	-	-	-	3/4 - 1 15/16

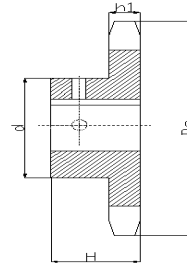


FINISHED BORE SPROCKETS FOR CHAIN 50 (5/8" Pitch)
SPROCKETS TYPE BS

Chain: Pitch: 15.875mm
 Internal width: 9.4mm
 Roller dia.: 10.16mm

Sprocket: Tooth radius r:
 Radius width C:
 Tooth width h1:
 Tooth width h2:
 Tooth width h3:
 Full high H: -

Note 1: † keyway with setscrew at 90°
 hub diameter vary to suit different bore sizes
 Note 2: ★ indicates no keyway, (Z) 1/4" setscrews only in 1/2" & 1/8" bore at 90°
 † keyway with setscrew at 90° and 180° to key



SIMPLEX-TYPE "BS"-2 SETSCREWS-BORED TO SIZE

Teeth	De	H	STOCK FINISHED BORES INCLUDES KEYWAY AND 2 SETSCREWS的普通成形孔									
48	9.91	1 1/4	1 - 1 1/8	- 1 3/16	- 1 1/4	- 1 3/8	- 1 7/16	- 1 1/2	-	- 3/4	- 1 15/16	
49	10.11	1 1/4	1 - 1 1/8	- 1 3/16	- 1 1/4	- 1 3/8	- 1 7/16	- 1 1/2	-	- 3/4	- 1 15/16	
50	10.31	1 1/4	1 - 1 1/8	- 1 3/16	- 1 1/4	- 1 3/8	- 1 7/16	- 1 1/2	-	- 3/4	- 1 15/16	
51	10.51	1 1/4	1 - 1 1/8	- 1 3/16	- 1 1/4	- 1 3/8	- 1 7/16	- 1 1/2	-	- 3/4	- 1 15/16	
52	10.71	1 1/4	1 - 1 1/8	- 1 3/16	- 1 1/4	- 1 3/8	- 1 7/16	- 1 1/2	-	- 3/4	- 1 15/16	
53	10.91	1 1/4	1 - 1 1/8	- 1 3/16	- 1 1/4	- 1 3/8	- 1 7/16	- 1 1/2	-	- 3/4	- 1 15/16	
54	11.11	1 1/4	1 - 1 1/8	- 1 3/16	- 1 1/4	- 1 3/8	- 1 7/16	- 1 1/2	-	- 3/4	- 1 15/16	
55	11.31	1 1/4	1 - 1 1/8	- 1 3/16	- 1 1/4	- 1 3/8	- 1 7/16	- 1 1/2	-	- 3/4	- 1 15/16	
56	11.5	1 1/4	1 - 1 1/8	- 1 3/16	- 1 1/4	- 1 3/8	- 1 7/16	- 1 1/2	-	- 3/4	- 1 15/16	
57	11.7	1 1/4	1 - 1 1/8	- 1 3/16	- 1 1/4	- 1 3/8	- 1 7/16	- 1 1/2	-	- 3/4	- 1 15/16	
58	11.9	1 1/4	1 - 1 1/8	- 1 3/16	- 1 1/4	- 1 3/8	- 1 7/16	- 1 1/2	-	- 3/4	- 1 15/16	
59	12.1	1 1/4	1 - 1 1/8	- 1 3/16	- 1 1/4	- 1 3/8	- 1 7/16	- 1 1/2	-	- 3/4	- 1 15/16	
60	12.3	1 1/4	1 - 1 1/8	- 1 3/16	- 1 1/4	- 1 3/8	- 1 7/16	- 1 1/2	-	- 3/4	- 1 15/16	
70	14.29	1 3/4	1 - 1 1/8	- 1 3/16	- 1 1/4	- 1 3/8	- 1 7/16	- 1 1/2	-	- 3/4	- 1 15/16	
72	14.69	1 3/4	1 - 1 1/8	- 1 3/16	- 1 1/4	- 1 3/8	- 1 7/16	- 1 1/2	-	- 3/4	- 1 15/16	
80	16.28	1 3/4	1 - 1 1/8	- 1 3/16	- 1 1/4	- 1 3/8	- 1 7/16	- 1 1/2	-	- 3/4	- 1 15/16	
84	17.08	1 3/4	1 - 1 1/8	- 1 3/16	- 1 1/4	- 1 3/8	- 1 7/16	- 1 1/2	-	- 3/4	- 1 15/16	
96	19.47	1 3/4	1 - 1 1/8	- 1 3/16	- 1 1/4	- 1 3/8	- 1 7/16	- 1 1/2	-	- 3/4	- 1 15/16	
112	22.65	1 3/4	1 - 1 1/8	- 1 3/16	- 1 1/4	- 1 3/8	- 1 7/16	- 1 1/2	-	- 3/4	- 1 15/16	

NO.50-HARDENED TEETH-2 SETCREWS-BORED TO SIZE

Teeth	De	H	STOCK FINISHED BORES INCLUDES KEYWAY AND 2 SETSCREWS的普通成形孔									
9	2.09	1	5/8	- 3/4								
10	2.3	1	5/8	- 3/4	- 7/8	- 1						
11	2.5	1	5/8	- 3/4	- 7/8	- 1						
12	2.71	1	5/8	- 3/4	- 7/8	- 1	- 1 1/8	- 1 3/16	- 1 1/4			
13	2.91	1	5/8	- 3/4	- 7/8	- 1	- 1 1/8	- 1 3/16	- 1 1/4			
14	3.11	1	5/8	- 3/4	- 7/8	- 1	- 1 1/8	- 1 3/16	- 1 1/4			
15	3.32	1	5/8	- 3/4	- 7/8	- 1	- 1 1/8	- 1 3/16	- 1 1/4	- 1 3/8	- 1 7/16	
16	3.52	1	5/8	- 3/4	- 7/8	- 1	- 1 1/8	- 1 3/16	- 1 1/4	- 1 3/8	- 1 7/16	
17	3.72	1	5/8	- 3/4	- 7/8	- 1	- 1 1/8	- 1 3/16	- 1 1/4	- 1 3/8	- 1 7/16	
18	3.92	1	3/4	- 7/8	- 1	- 1 1/8	- 1 3/16	- 1 1/4	- 1 3/8	- 1 7/16	- 1 1/2	
19	4.12	1	3/4	- 7/8	- 1	- 1 1/8	- 1 3/16	- 1 1/4	- 1 3/8	- 1 7/16	- 1 1/2	
20	4.32	1	3/4	- 7/8	- 1	- 1 1/8	- 1 3/16	- 1 1/4	- 1 3/8	- 1 7/16	- 1 1/2	
21	4.52	1	3/4	- 7/8	- 1	- 1 1/8	- 1 3/16	- 1 1/4	- 1 3/8	- 1 7/16	- 1 1/2	
22	4.72	1	3/4	- 7/8	- 1	- 1 1/8	- 1 3/16	- 1 1/4	- 1 3/8	- 1 7/16	- 1 1/2	
23	4.92	1	3/4	- 7/8	- 1	- 1 1/8	- 1 3/16	- 1 1/4	- 1 3/8	- 1 7/16	- 1 1/2	
24	5.12	1 1/4	3/4	- 7/8	- 1	- 1 1/8	- 1 3/16	- 1 1/4	- 1 3/8	- 1 7/16	- 1 1/2	

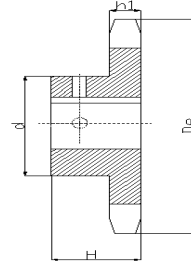


**FINISHED BORE SPROCKETS 60 (3/4" Pitch)
SPROCKETS TYPE BS**

Chain: Pitch: 19.05mm
Internal width: 12.57mm
Roller dia.: 11.91mm

Sprocket: Tooth radius r:
Radius width C:
Tooth width h1:
Tooth width h2:
Tooth width h3:
Full height H: -

Note 1:hub diameter vary to suit different bore sizes
★W=winch sprockets-KW 5/16X5/32-SS at 90°



SIMPLEX-TYPE"BS"-2 SETSCREWS-BORED TO SIZE

Teeth	De	H	STOCK FINISHED BORES INCLUDES KEYWAY AND 2 SETSCREWS
47	11.65	1 1/4	1 - 1 1/8 - 1 3/16 - 1 1/4 - 1 3/8 - 1 7/16 - 1 1/2 - 1 5/8 - 1 3/4 - 1 15/16 - 2 - 2 3/16 - 2 7/16
48	11.89	1 1/4	1 - 1 1/8 - 1 3/16 - 1 1/4 - 1 3/8 - 1 7/16 - 1 1/2 - 1 5/8 - 1 3/4 - 1 15/16 - 2 - 2 3/16 - 2 7/16
49	12.13	1 1/4	1 - 1 1/8 - 1 3/16 - 1 1/4 - 1 3/8 - 1 7/16 - 1 1/2 - 1 5/8 - 1 3/4 - 1 15/16 - 2 - 2 3/16 - 2 7/16
50	12.37	1 1/4	1 - 1 1/8 - 1 3/16 - 1 1/4 - 1 3/8 - 1 7/16 - 1 1/2 - 1 5/8 - 1 3/4 - 1 15/16 - 2 - 2 3/16 - 2 7/16
51	12.61	1 1/4	1 - 1 1/8 - 1 3/16 - 1 1/4 - 1 3/8 - 1 7/16 - 1 1/2 - 1 5/8 - 1 3/4 - 1 15/16 - 2 - 2 3/16 - 2 7/16
52	12.85	1 1/4	1 - 1 1/8 - 1 3/16 - 1 1/4 - 1 3/8 - 1 7/16 - 1 1/2 - 1 5/8 - 1 3/4 - 1 15/16 - 2 - 2 3/16 - 2 7/16
53	13.09	1 1/4	1 - 1 1/8 - 1 3/16 - 1 1/4 - 1 3/8 - 1 7/16 - 1 1/2 - 1 5/8 - 1 3/4 - 1 15/16 - 2 - 2 3/16 - 2 7/16
54	13.33	1 3/4	1 - 1 1/8 - 1 3/16 - 1 1/4 - 1 3/8 - 1 7/16 - 1 1/2 - 1 5/8 - 1 3/4 - 1 15/16 - 2 - 2 3/16 - 2 7/16
55	13.57	1 3/4	- 1 3/8 - 1 7/16 - 1 1/2 - 1 5/8 - 1 3/4 - 1 15/16 - 2 - 2 3/16 - 2 7/16
56	13.81	1 3/4	- 1 3/8 - 1 7/16 - 1 1/2 - 1 5/8 - 1 3/4 - 1 15/16 - 2 - 2 3/16 - 2 7/16
57	14.04	1 3/4	- 1 3/8 - 1 7/16 - 1 1/2 - 1 5/8 - 1 3/4 - 1 15/16 - 2 - 2 3/16 - 2 7/16
58	14.28	1 3/4	- 1 3/8 - 1 7/16 - 1 1/2 - 1 5/8 - 1 3/4 - 1 15/16 - 2 - 2 3/16 - 2 7/16
59	14.52	1 3/4	- 1 3/8 - 1 7/16 - 1 1/2 - 1 5/8 - 1 3/4 - 1 15/16 - 2 - 2 3/16 - 2 7/16
60	14.76	1 3/4	- 1 3/8 - 1 7/16 - 1 1/2 - 1 5/8 - 1 3/4 - 1 15/16 - 2 - 2 3/16 - 2 7/16
70	17.15	1 3/4	- 1 3/8 - 1 7/16 - 1 1/2 - 1 5/8 - 1 3/4 - 1 15/16 - 2 - 2 3/16 - 2 7/16
72	17.63	2	- 1 3/8 - 1 7/16 - 1 1/2 - 1 5/8 - 1 3/4 - 1 15/16 - 2 - 2 3/16 - 2 7/16
80	19.54	2	- 1 3/8 - 1 7/16 - 1 1/2 - 1 5/8 - 1 3/4 - 1 15/16 - 2 - 2 3/16 - 2 7/16
84	20.49	2	- 1 3/8 - 1 7/16 - 1 1/2 - 1 5/8 - 1 3/4 - 1 15/16 - 2 - 2 3/16 - 2 7/16
96	23.36	2 1/4	- 1 3/8 - 1 7/16 - 1 1/2 - 1 5/8 - 1 3/4 - 1 15/16 - 2 - 2 3/16 - 2 7/16
112	27.18	2 1/4	- 1 3/8 - 1 7/16 - 1 1/2 - 1 5/8 - 1 3/4 - 1 15/16 - 2 - 2 3/16 - 2 7/16

NO.60-HARDENED TEETH-2 SETCREWS

Teeth	De	H	STOCK FINISHED BORES INCLUDES KEYWAY AND 2 SETSCREWS
9	2.51	1 1/4	3/4 - 7/8 - 1
10	2.76	1 1/4	3/4 - 7/8 - 1 - 1 1/8 1 3/16 - 1 1/4
11	3	1 1/4	3/4 - 7/8 - 1 - 1 1/8 1 3/16 - 1 1/4
12	3.25	1 1/4	3/4 - 7/8 - 1 - 1 1/8 1 3/16 - 1 1/4 - 1 7/16
13	3.49	1 1/4	3/4 - 7/8 - 1 - 1 1/8 1 3/16 - 1 1/4 - 1 3/8 - 1 7/16 - 1 1/2
14	3.74	1 1/4	3/4 - 7/8 - 1 - 1 1/8 1 3/16 - 1 1/4 - 1 3/8 - 1 7/16 - 1 1/2 - 1 5/8
15	3.98	1 1/4	3/4 - 7/8 - 1 - 1 1/8 1 3/16 - 1 1/4 - 1 3/8 - 1 7/16 - 1 1/2 - 1 5/8 - 1 3/4
16	4.22	1 1/4	3/4 - 7/8 - 1 - 1 1/8 1 3/16 - 1 1/4 - 1 3/8 - 1 7/16 - 1 1/2 - 1 5/8 - 1 3/4 - 1 15/16
17	4.46	1 1/4	- 1 - 1 1/8 1 3/16 - 1 1/4 - 1 3/8 - 1 7/16 - 1 1/2 - 1 5/8 - 1 3/4 - 1 15/16
18	4.7	1 1/4	- 1 - 1 1/8 1 3/16 - 1 1/4 - 1 3/8 - 1 7/16 - 1 1/2 - 1 5/8 - 1 3/4 - 1 15/16
19	4.95	1 1/4	- 1 - 1 1/8 1 3/16 - 1 1/4 - 1 3/8 - 1 7/16 - 1 1/2 - 1 5/8 - 1 3/4 - 1 15/16
20	5.19	1 1/4	- 1 - 1 1/8 1 3/16 - 1 1/4 - 1 3/8 - 1 7/16 - 1 1/2 - 1 5/8 - 1 3/4 - 1 15/16

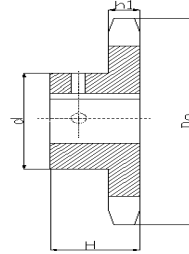


**FINISHED BORE SPROCKETS FOR CHAIN 80 (1" Pitch)
SPROCKETS TYPE BS**

Chain: Pitch: 25.4mm
Internal width: 15.75mm
Roller dia.: 15.88mm

Sprocket: Tooth radius r:
Radius width C:
Tooth width h1:
Tooth width h2:
Tooth width h3:
Full high H: -

Note 1:hub diameter vary to suit different bore sizes
★W=winch sprockets-KW 5/16X5/32-SS at 90°



SIMPLEX-TYPE"BS"-2 SETSCREWS-BORED TO SIZE

Teeth	De	H	STOCK FINISHED BORES INCLUDES KEYWAY AND 2 SETSCREWS											
47	15.54	2	1 3/8	1 7/16	1 1/2	1 5/8	1 3/4	1 15/16	2	2 3/16	2 7/16	2 15/16		
48	15.86	2	1 3/8	1 7/16	1 1/2	1 5/8	1 3/4	1 15/16	2	2 3/16	2 7/16	2 15/16		
49	16.18	2	1 3/8	1 7/16	1 1/2	1 5/8	1 3/4	1 15/16	2	2 3/16	2 7/16	2 15/16		
50	16.5	2	1 3/8	1 7/16	1 1/2	1 5/8	1 3/4	1 15/16	2	2 3/16	2 7/16	2 15/16		
51	16.81	2	1 3/8	1 7/16	1 1/2	1 5/8	1 3/4	1 15/16	2	2 3/16	2 7/16	2 15/16		
52	17.13	2	1 3/8	1 7/16	1 1/2	1 5/8	1 3/4	1 15/16	2	2 3/16	2 7/16	2 15/16		
53	17.45	2	1 3/8	1 7/16	1 1/2	1 5/8	1 3/4	1 15/16	2	2 3/16	2 7/16	2 15/16		
54	17.77	2	1 3/8	1 7/16	1 1/2	1 5/8	1 3/4	1 15/16	2	2 3/16	2 7/16	2 15/16		
55	18.09	2	1 3/8	1 7/16	1 1/2	1 5/8	1 3/4	1 15/16	2	2 3/16	2 7/16	2 15/16		
56	18.41	2	1 3/8	1 7/16	1 1/2	1 5/8	1 3/4	1 15/16	2	2 3/16	2 7/16	2 15/16		
57	18.73	2	1 3/8	1 7/16	1 1/2	1 5/8	1 3/4	1 15/16	2	2 3/16	2 7/16	2 15/16		
58	19.04	2	1 3/8	1 7/16	1 1/2	1 5/8	1 3/4	1 15/16	2	2 3/16	2 7/16	2 15/16		
59	19.36	2	1 3/8	1 7/16	1 1/2	1 5/8	1 3/4	1 15/16	2	2 3/16	2 7/16	2 15/16		
60	19.68	2	1 3/8	1 7/16	1 1/2	1 5/8	1 3/4	1 15/16	2	2 3/16	2 7/16	2 15/16		

NO.80-HARDENED TEETH-2 SETCREWS

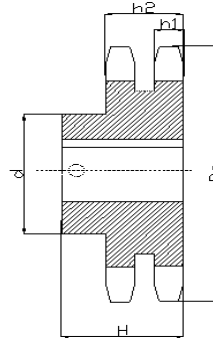
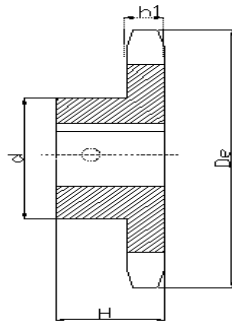
Teeth	De	H	STOCK FINISHED BORES INCLUDES KEYWAY AND 2 SETSCREWS											
9	3.35	1 5/8	1	- 1 1/8	1 3/16	1 1/4								
10	3.68	1 5/8	1	- 1 1/8	1 3/16	1 1/4								
11	4.01	1 5/8	1	- 1 1/8	1 3/16	1 1/4	- 1 3/8	1 7/16	1 1/2	- 1 5/8				
12	4.33	1 5/8	1	- 1 1/8	1 3/16	1 1/4	- 1 3/8	1 7/16	1 1/2	- 1 5/8	- 1 3/4			
13	4.66	1 1/2	1	- 1 1/8	1 3/16	1 1/4	- 1 3/8	1 7/16	1 1/2	- 1 5/8	- 1 3/4	1 7/8	- 1 15/16	- 2
14	4.98	1 1/2	1	- 1 1/8	1 3/16	1 1/4	- 1 3/8	1 7/16	1 1/2	- 1 5/8	- 1 3/4	1 7/8	- 1 15/16	- 2
15	5.3	1 1/2	1	- 1 1/8	1 3/16	1 1/4	- 1 3/8	1 7/16	1 1/2	- 1 5/8	- 1 3/4	1 7/8	- 1 15/16	- 2
16	5.63	1 1/2	1		- 1 1/4	- 1 3/8	1 7/16	1 1/2	- 1 5/8	- 1 3/4		- 1 15/16	- 2	
17	5.95	1 1/2	1		- 1 1/4	- 1 3/8	1 7/16	1 1/2	- 1 5/8	- 1 3/4		- 1 15/16	- 2	- 2 7/16
18	6.27	1 1/2	1		- 1 1/4	- 1 3/8	1 7/16	1 1/2	- 1 5/8	- 1 3/4		- 1 15/16	- 2	- 2 7/16
19	6.59	1 1/2	1		- 1 1/4	- 1 3/8	1 7/16	1 1/2	- 1 5/8	- 1 3/4		- 1 15/16	- 2	- 2 7/16
20	6.91	1 1/2	1		- 1 1/4	- 1 3/8	1 7/16	1 1/2	- 1 5/8	- 1 3/4		- 1 15/16	- 2	- 2 7/16



**FINISHED BORE SPROCKETS 80 FOR CHAIN (1" Pitch)
SPROCKETS TYPE BS**

Chain: Pitch: 25.4mm
Internal width: 15.75mm
Roller dia.: 15.88mm

Sprocket: Tooth radius r:
Radius width C:
Tooth width h1:
Tooth width h2:
Tooth width h3:
Full high H: -



SIMPLEX-TYPE"BS" WINCH-2 SETSCREWS

Teeth	De	SIMPLEX		DUPLEX	
		H	STOCK FINISHED BORES INCLUDES KEYWAY(see Footnote) and Screw at 90°from Keyway	H	STOCK FINISHED BORES INCLUDES KEYWAY(see Footnote) and Screw at 90°from Keyway
10	3.68	1 5/8	1 1/4		
11	4.01	1 5/8	1 1/4		
12	4.33	1 5/8	1 1/4	2 1/2	1 1/4 - 1 1/2 - 1 3/4
15	5.3	1 1/2	1 1/4	2 1/2	1 1/4 - 1 1/2 - 1 3/4
18	6.27	1 1/2	1 1/4 - 1 1/2	2 3/4	1 1/2 - 1 3/4 - 2
20	6.91			2 3/4	1 1/2 - 1 3/4 - 2
24	8.2			2 3/4	1 1/2 - 2

NOTE:

- 1/4"bore has a 5/16x5/32"keyway,set screw at 90° from keyway.
- 1 1/2"bore has a 5/16x5/32"keyway,set screw at 90° from keyway.
- 1 3/4"bore has a 3/8x3/16"keyway,set screw at 90° from keyway.
- 2"bore has a 3/8x3/16"keyway,set screw at 90° from keyway.

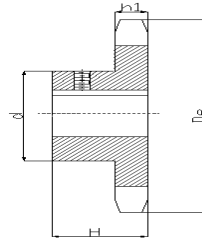


**FINISHED BORE SPROCKETS FOR CHAIN 100 (1 1/4" Pitch)
SPROCKETS TYPE BS**

Chain: Pitch: 31.75mm
Internal width: 18.9mm
Roller dia.: 19.05mm

Sprocket: Tooth radius r:
Radius width C:
Tooth width h1:
Tooth width h2:
Tooth width h3:
Full high H: -

Note 1: hub diameter vary to suit different bore sizes



SIMPLEX-TYPE "BS"-2 SETSCREWS-BORED TO SIZE

Teeth	De	H	STOCK FINISHED BORES INCLUDES KEYWAY AND 2 SETSCREWS						
8	3.77	1 7/8	1	- 1 3/16 - 1 1/4					
9	4.18	1 7/8	1	- 1 3/16 - 1 1/4	1 7/16				
10	4.6	1 7/8	1	- 1 3/16 - 1 1/4	1 7/16				
11	5.01	1 7/8	1	- 1 3/16 - 1 1/4	1 7/16 - 1 15/16	- 2	- 2 3/16		
12	5.42	1 7/8		- 1 3/16 - 1 1/4	1 7/16 - 1 15/16	- 2	- 2 3/16		
13	5.82	1 5/8		- 1 1/4	1 7/16 - 1 15/16	- 2	- 2 3/16		
14	6.23	1 5/8		- 1 1/4	1 7/16 - 1 15/16	- 2	- 2 3/16		
15	6.63	1 3/4			- 1 7/16 - 1 15/16	- 2	- 2 3/16		
16	7.03	1 3/4			- 1 7/16 - 1 15/16	- 2	- 2 3/16	- 2 7/16	- 2 15/16
17	7.44	1 3/4			- 1 7/16 - 1 15/16	- 2	- 2 3/16	- 2 7/16	- 2 15/16
18	7.84	1 3/4			- 1 7/16 - 1 15/16	- 2	- 2 3/16	- 2 7/16	- 2 15/16
19	8.24	2			- 1 7/16 - 1 15/16	- 2	- 2 3/16	- 2 7/16	- 2 15/16
20	8.64	2			- 1 7/16 - 1 15/16	- 2	- 2 3/16	- 2 7/16	- 2 15/16
21	9.04	2			- 1 7/16 - 1 15/16	- 2	- 2 3/16	- 2 7/16	- 2 15/16
22	9.44	2			- 1 7/16 - 1 15/16	- 2	- 2 3/16	- 2 7/16	- 2 15/16
23	9.84	2			- 1 7/16 - 1 15/16	- 2	- 2 3/16	- 2 7/16	- 2 15/16
24	10.25	2			- 1 7/16 - 1 15/16	- 2	- 2 3/16	- 2 7/16	- 2 15/16
25	10.65	2			- 1 7/16 - 1 15/16	- 2	- 2 3/16	- 2 7/16	- 2 15/16

STANDARD KEYWAYS AND SETSCREWS

Diameter of Shaft	Keyway	Setscrew	Diameter of Shaft	Keyway	Setscrew
	WidthxDepth			WidthxDepth	
1/2-9/16	1/8x1/16	10-24	2 5/16-2 3/4	5/8x5/16	5/8★
5/8-7/8	3/16x3/32	1/4	13/16-3 1/4	3/4x3/8	5/8★
15/16-1 1/4	1/4x1/8	5/16	3 5/16-3 3/4	7/8x7/16	3/4
1 5/16-1 3/8	5/16x5/32	5/16	3 13/16-4 1/2	1x1/2	3/4
1 7/16-1 3/4	3/8x3/16	3/8	4 9/16-5 1/2	1/4x5/8	3/4
1 13/16-2 1/4	1/2x1/4	1/2★	5 9/16-6 1/2	1 1/2x3/4	3/4

STANDARD BORE TOLERANCES

1" and Less	+0.001-0.000
1 1/16" to 2"	+0.002-0.000
2 1/16" to 3"	+0.003-0.000
3 1/16" & up	+0.004-0.000